

## Plastics injection moulding:

We manufacture plastic parts using modern injection molding technology on the latest generation of machines. We process orders using supplied molds and have injection molding machines with a wide range of clamping forces, which allows us to respond flexibly to customer needs.

We specialize in the production of medium-sized plastic products, such as boxes, tiles and other components. We also now offer injection molding on large injection molding machines, which opens up possibilities for the production of parts for the consumer industry (for example, parts of dryers, washing machines or coffee machines), for the electrical engineering segment (parts of printers and copiers) and for the automotive sector (bumper parts and others).

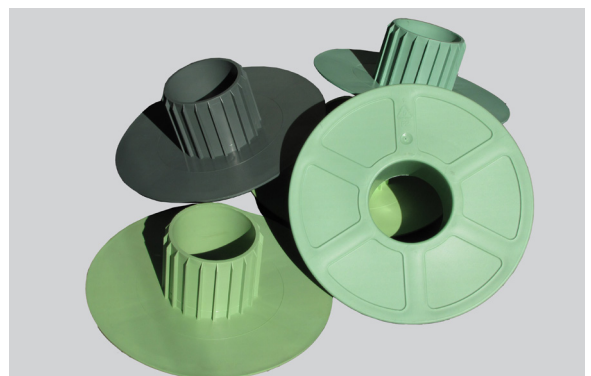
## Advantages:

- High quality finish of all products.
- Favourable price due to efficient production.
- Flexible production and logistics.
- Experience in automated mass production of large series.
- Graphic design available for products.
- Option for mould production according to requirements, including product development.
- Option for injection moulding with moulds supplied by customers.



## Processed material:

- We process PP, LDPE, HDPE, and other materials requested by customers (PE, PS, ABS, POM etc.).
- We also process regranulate from PP, PE, PE/PP (recycling of internal / external production waste).



## Applications:

- Multipurpose plastic floor tiles for both exterior and interior use (patios, balconies, pools, bathrooms).
- Plastic caps for rolls.
- Products for automotive purposes (bumpers, etc.).
- Boxes + lids, punnets, crates.
- Other consumer and technical plastics.



## Machine equipment:

- Injection-moulding machine type – DEMAG, ARBURG, BATTENFELD, NEGRI BOSSI.
- Locking force from 420 t to 1100 t.
- Weight of mouldings: 80 g – 3000 g.
- Supplementary equipment – robots and manipulators for automated production.
- Option for assembly completion, automated serial mass-production.
- Utilizing a supplied mould we are able to produce any injection moulded product to the stated parameters.



Injection-moulding plant I



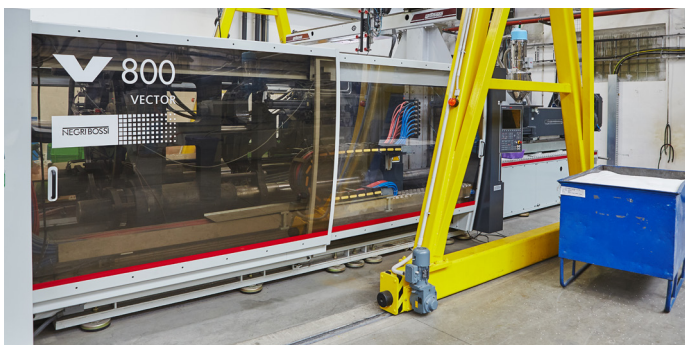
Injection-moulding plant II



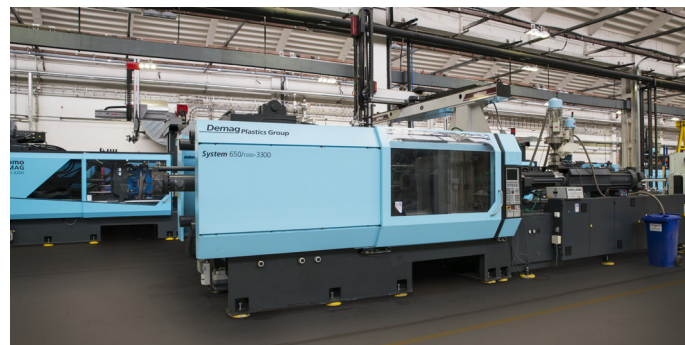
BATTENFELD, Locking force 6 000 – 8 000 kN



ARBURG, Locking force 4 600 kN



NEGRI BOSSI, Locking force 6 500 – 11 000 kN



DEMAG, Locking force 4 200 – 6 500 kN

**Please do not hesitate to contact us for more information or a specific offer.**